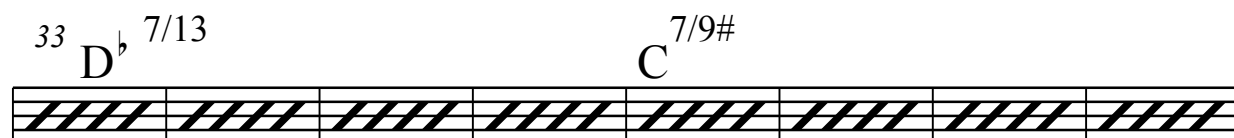
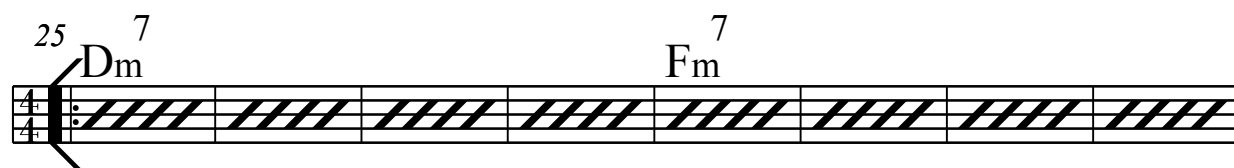
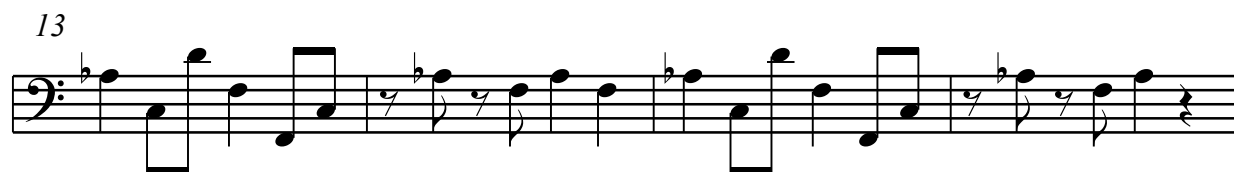


bass

Gone Bush

N.Schäuble



49 A^{\flat}_m ⁷ A_m ^{7/5b}

57 D_m ⁷ F_m ⁷ D^{\flat} ^{7/13}

63 C ^{7/9#} F_m ^{6/9} G_m ⁷

69 A^{\flat}_m ⁷ A_m ^{7/5b}

The image shows four musical staves, each containing a sequence of chords. The first staff (measures 49-56) features A^{\flat}_m ⁷ and A_m ^{7/5b}. The second staff (measures 57-62) features D_m ⁷, F_m ⁷, and D^{\flat} ^{7/13}. The third staff (measures 63-68) features C ^{7/9#}, F_m ^{6/9}, and G_m ⁷. The fourth staff (measures 69-72) features A^{\flat}_m ⁷ and A_m ^{7/5b}. Each staff is filled with diagonal lines, and the chords are indicated by text above the staves.